



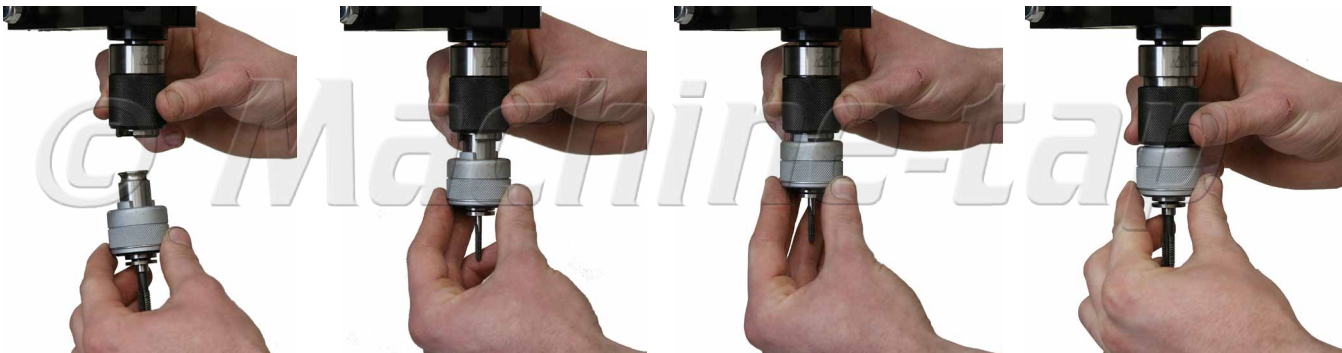
Hydraulic Tapping Machine

Doc V: 1.0

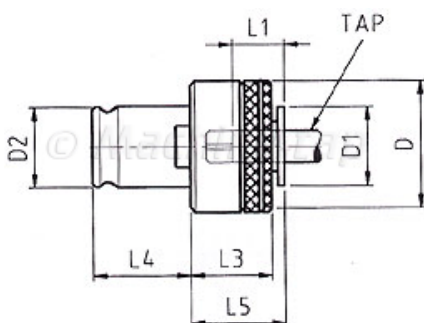


Model Number	Tapping Range	Working Area		Collet Type
		Min	Max	
TA-HY-1600-42	M12 to M42	200	1600	TYPE 3

Quick Change Collet Chuck



The hydraulic motor is equipped with a chuck and each tap is held in its own collet (collets supplied separately). To change to a different tap size, lift the locking ring on the chuck. This will eject the collet from the motor. Select the collet with the desired tap size. Insert the collet into the chuck. Locate the two drive pegs on the collet and release the locking ring to secure.



Collet Type	D	D1	D2	L1	L3	L4	L5
TYPE 3	72	48	48	48	41	56	52

