



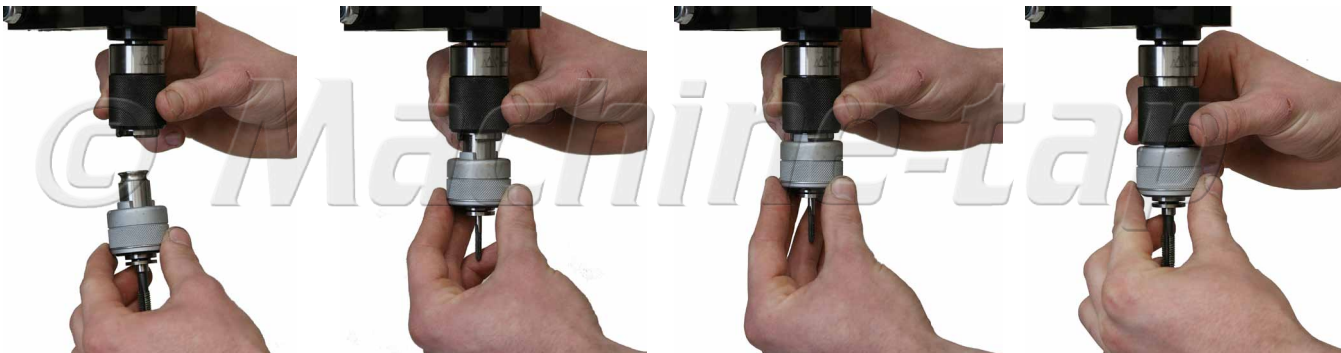
I 600 Series Tapping Arm

Doc V: 1.0

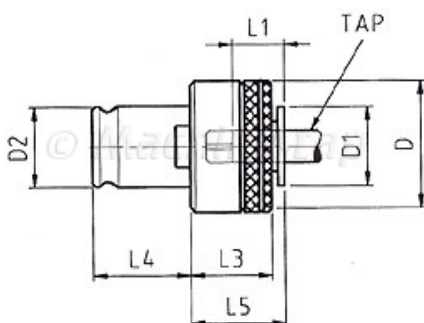


Model Number	Tapping Range	Working Area		RPM	Collet Type	Weight
		Min	Max			
TA-1600-8	M2 to M8	500	1600	700	TYPE 1	19Kg
TA-1600-12	M3 to M12	500	1600	400	TYPE 1	19Kg
TA-1600-16	M5 to M16	500	1600	300	TYPE 2	24Kg
TA-1600-16-AN	M5 to M16	500	1600	300	TYPE 2	24Kg
TA-1600-27	M5 to M27	500	1600	70/220	TYPE 2	24Kg

Quick Change Collet Chuck



The pneumatic motor is equipped with a chuck and each tap is held in its own collet (collets supplied separately). To change to a different tap size, lift the locking ring on the chuck. This will eject the collet from the motor. Select the collet with the desired tap size. Insert the collet into the chuck. Locate the two drive pegs on the collet and release the locking ring to secure.



Collet Type	D	D1	D2	L1	L3	L4	L5
TYPE 1	23	12.5	13	15	20	19.5	21
TYPE 2	50	30	31	30	31	35	33

